

# ALLEGATI

**SCHEDA 1 APERTURE**

**SCHEDA 2 COPERTURE**

**SCHEDA 3 BALCONI LOGGE**

**SCHEDA 4 RINGHIERE / RECINZIONI**

**SCHEDA 5 FABBRICATI ACCESSORI**

**SCHEDA 6 FABBRICATI ACCESSORI**

**SCHEDA 7 AMPLIAMENTI**

**SCHEDA 8 NUOVI FABBRICATI**

**SCHEDA 9 FABBRICATI RURALI**

**SCHEDA 10 FABBRICATI RURALI**

**DEFINIZIONE DEI TIPI DI INTERVENTO DI CUI ALL'ART. 13  
DELLA LR 56/77 COME DA CIRC. 5/SG/URB DEL 27/04/84**

# SCHEDA 1 APERTURE

CARATTERISTICA INFISSI A TAGLIO TRADIZIONALE  
CON PREVALENZA DIMENSIONE VERTICALE



B

finestre

$$\frac{A}{B} \cong 0,60$$

A



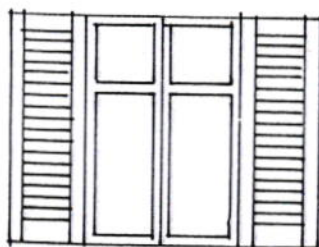
B

porte e porte finestre

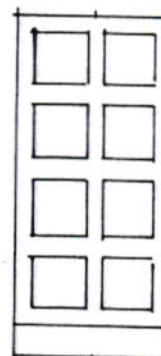
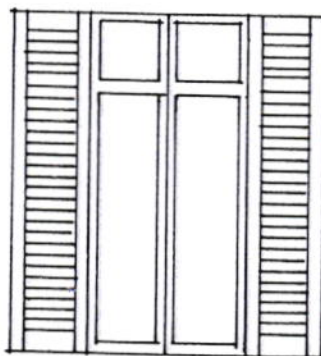
$$\frac{A}{B} \cong 0,40$$

A

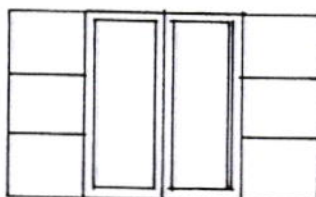
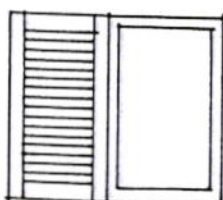
## TIPI DI RIFERIMENTO



con persiane



portoncino d'ingresso

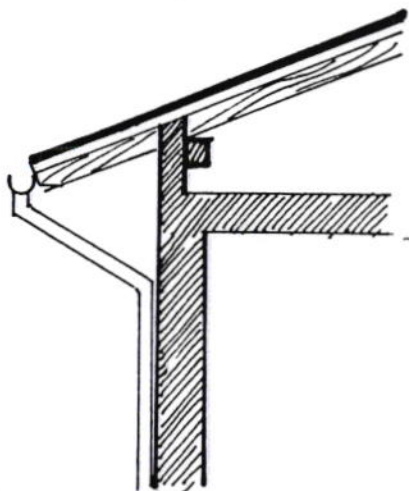


finestra con  
antoni

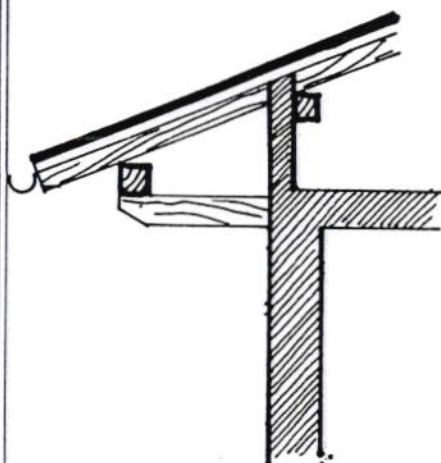
# SCHEDA 2 COPERTURE

SPORTI DI GRONDA, COMIGNOLI, PROTEZIONI SU PORTONCINI E FINESTRE

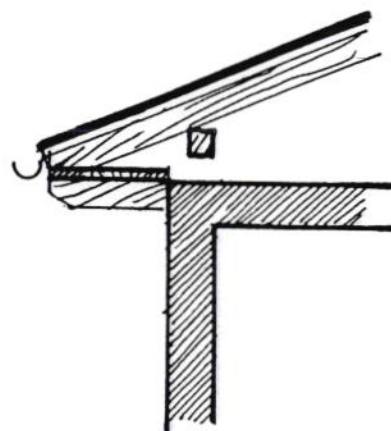
sporto semplice



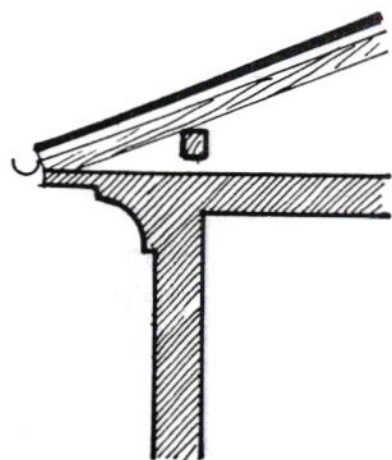
sporto con banchina



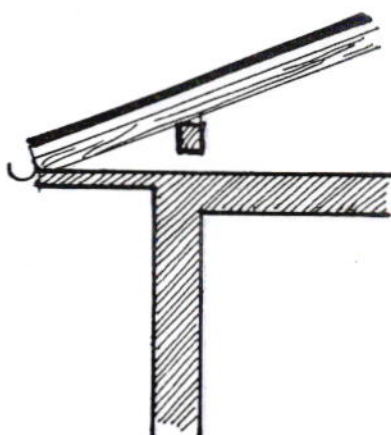
sporto piano



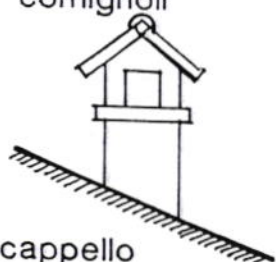
sporto pietra



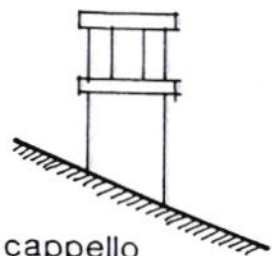
sporto cemento



comignoli

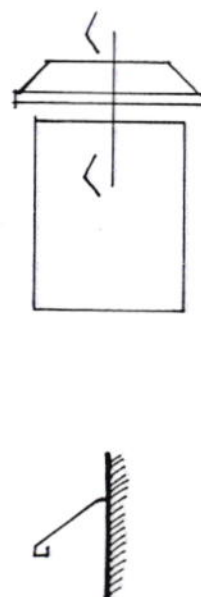
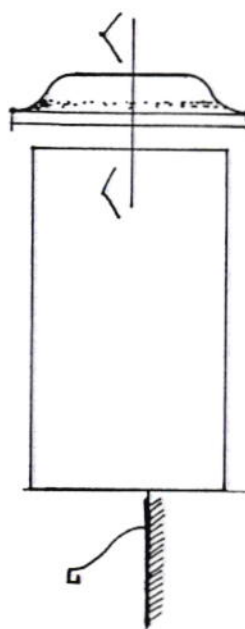


cappello  
in tegole



cappello  
in pietra

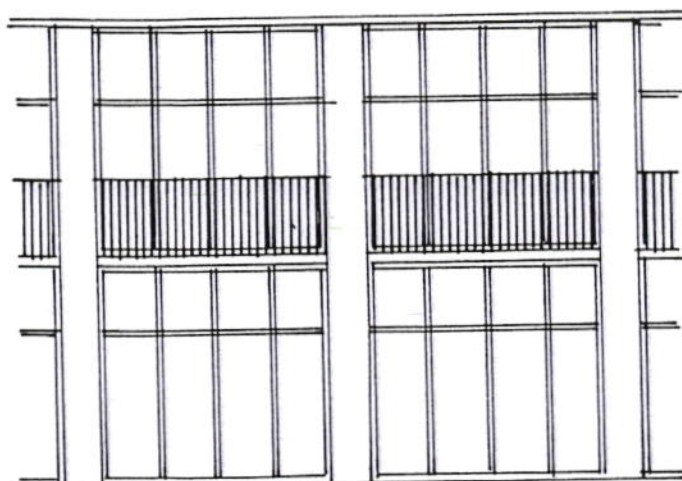
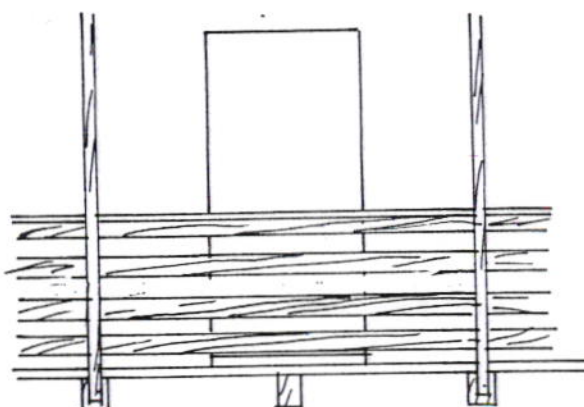
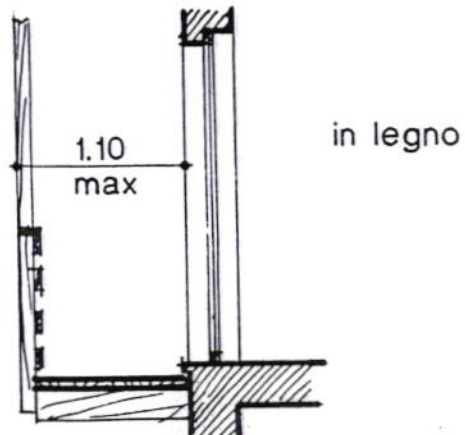
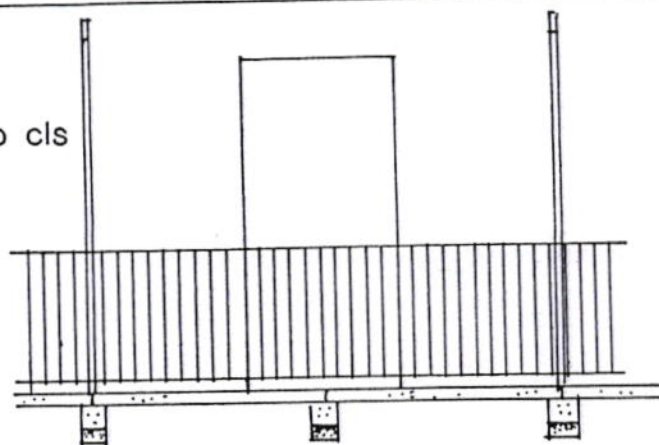
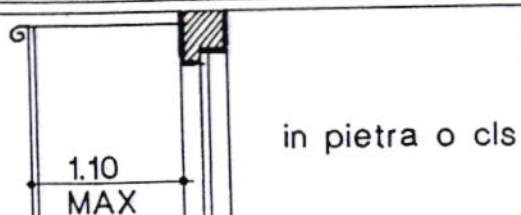
protezioni su portoncini e finestre



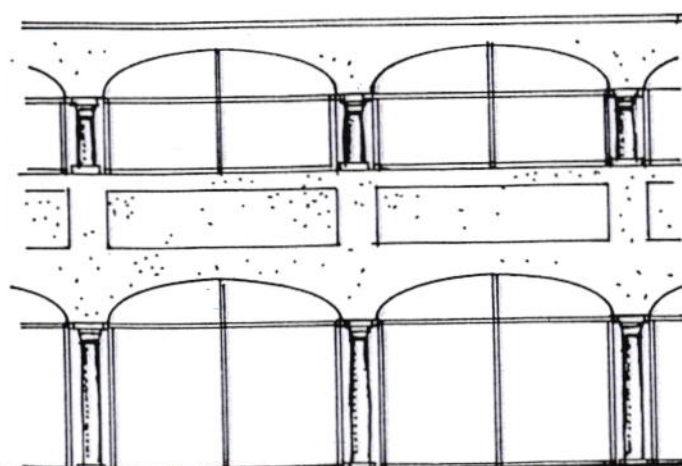


# **SCHEDA 3 BALCONI LOGGE**

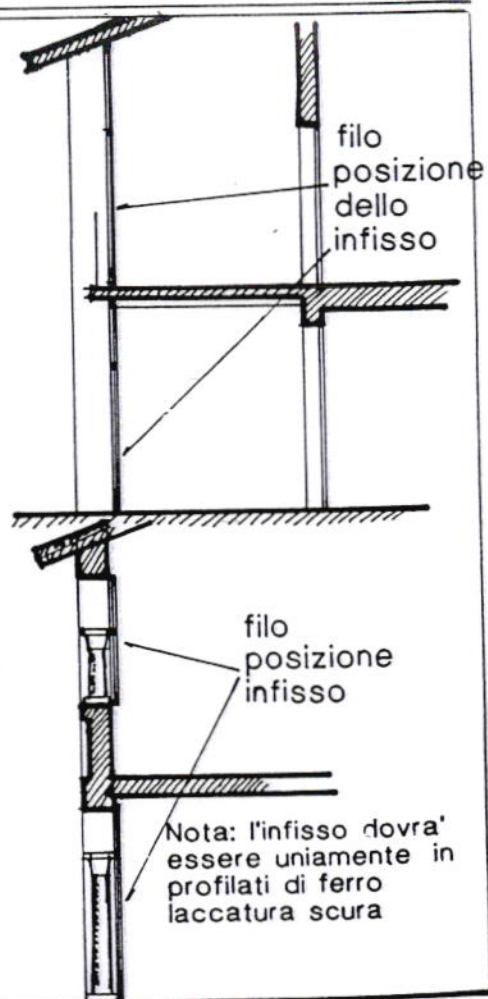
MANUFATTI E CRITERI AMMESSI PER IL TAMPONAMENTO CON VETRATE DELLE LOGGE



porticato



loggato

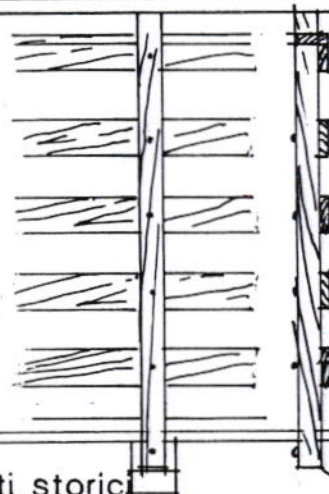
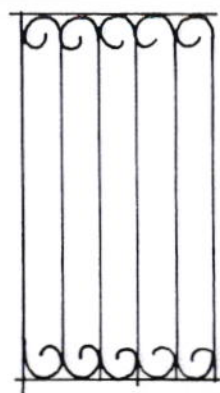
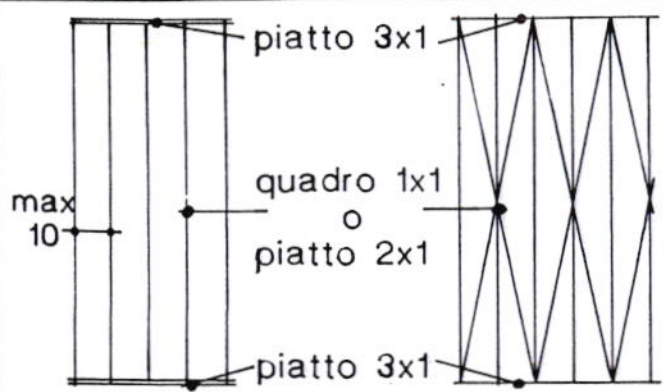


# **SCHEDA 4 RINGHIERE/RECINZIONI**

TIPI BASE

in ferro

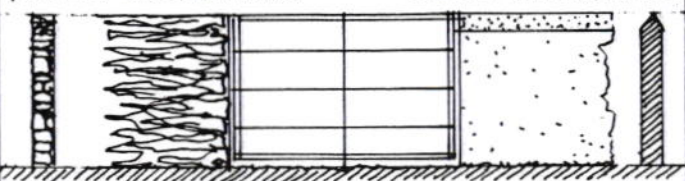
in legno



pietra facciavista

muro intonacato

- 1 insediamenti storici
  - 2 aree urbane
  - 3 aree urbane
  - 4 aree urbane e agricole
  - 5 aree urbane e agricole
- alle recinzioni da 2 a 5 e'  
associabile una siepe

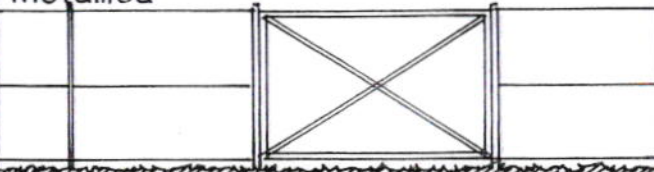
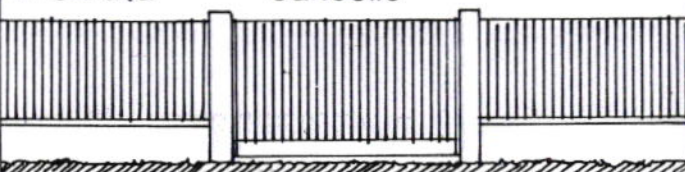


inferriata

cancello

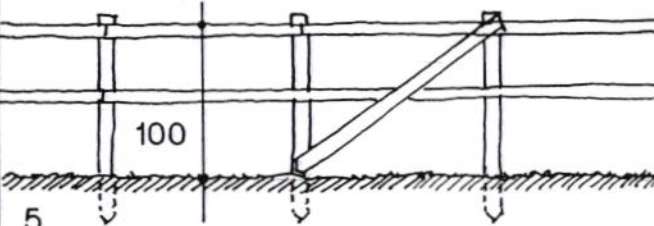
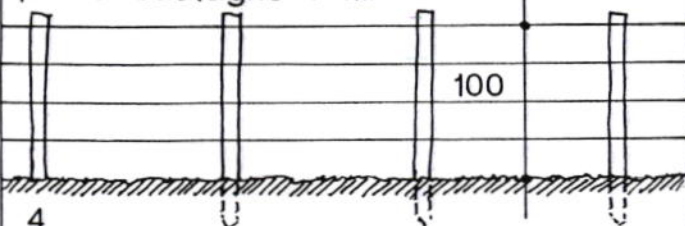
rete  
metallica

cancello

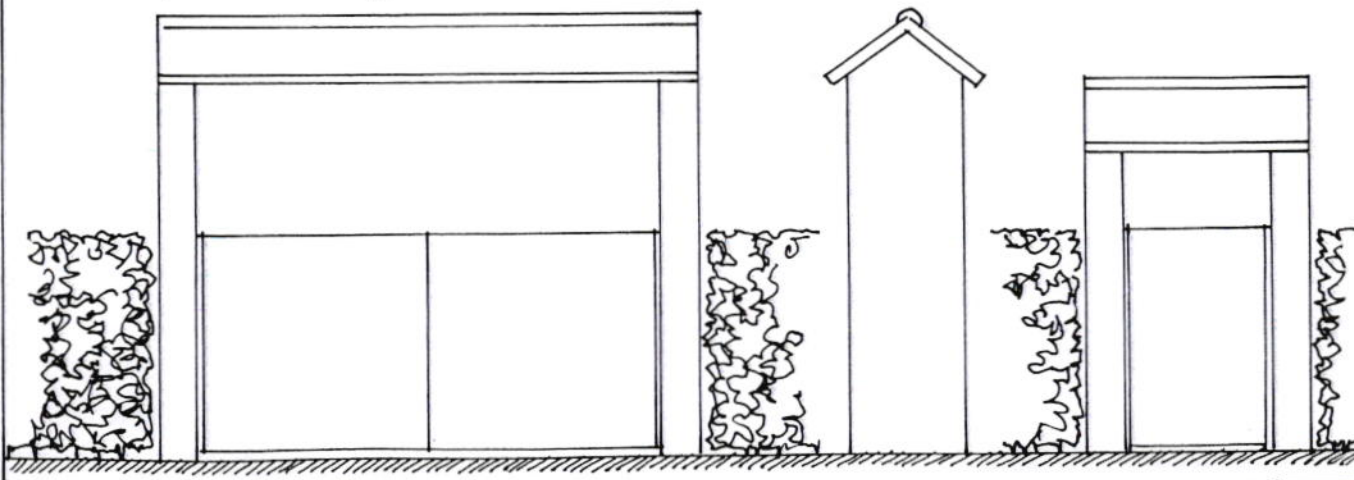


pali di castagno + fili

staccionata



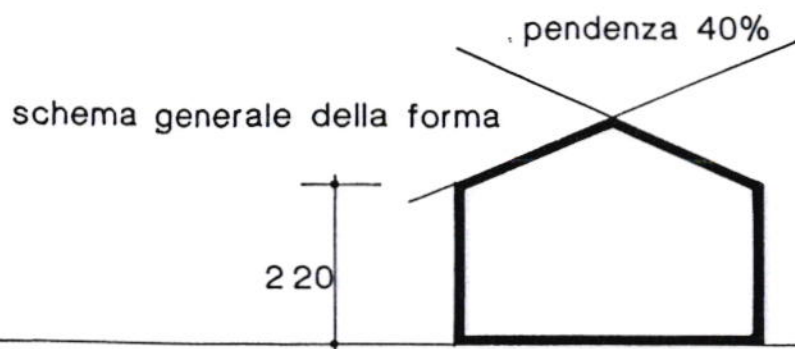
pensilina d'ingresso carraio e pedonale



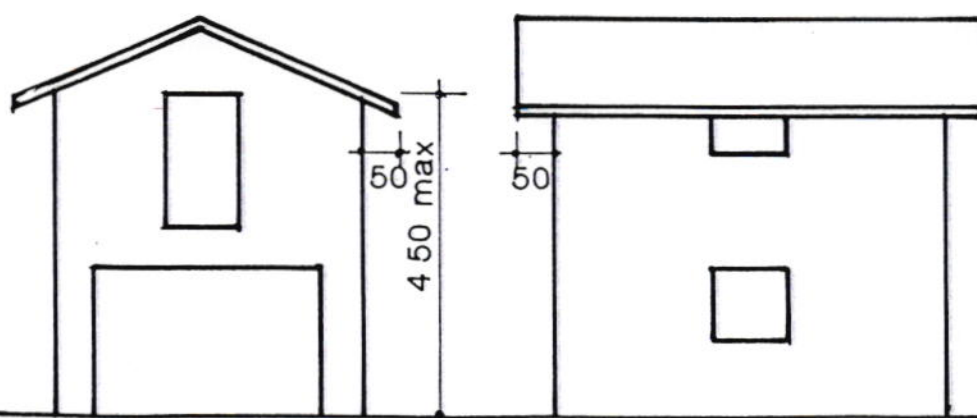
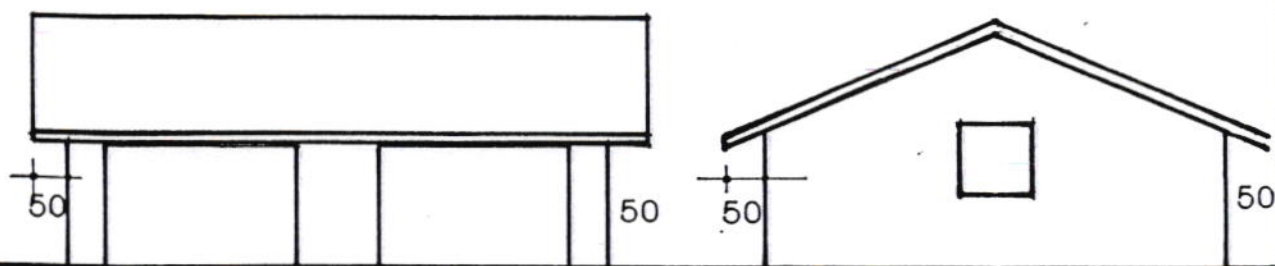
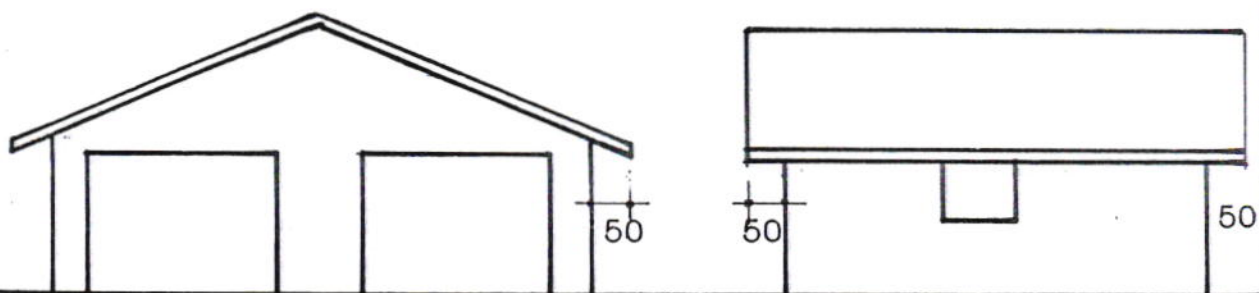
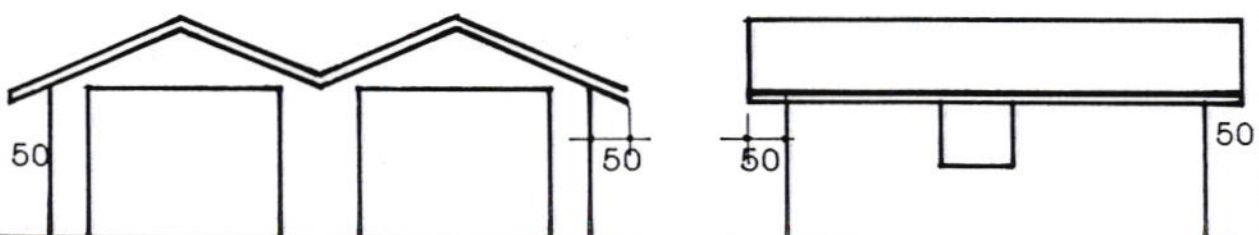


# SCHEDA 5 FABBRICATI ACCESSORI

SPECIALMENTE INDICATI PER AMBITI URBANI

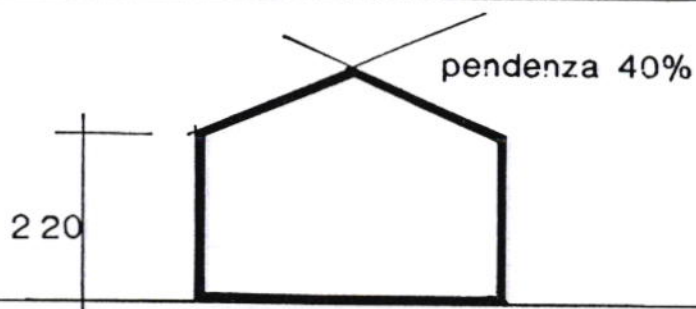


variazioni applicative possibili

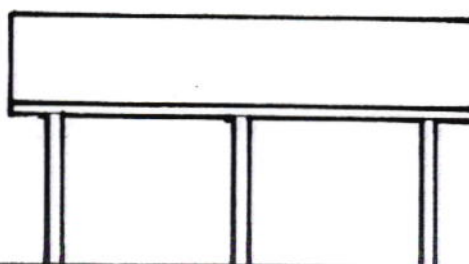
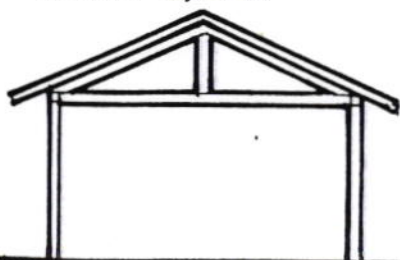


# SCHEDA 6 FABBRICATI ACCESSORI

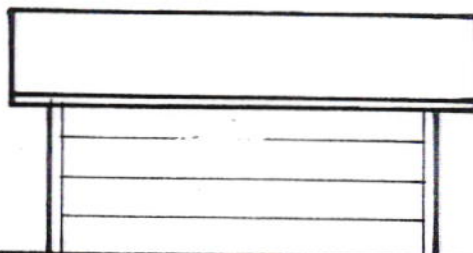
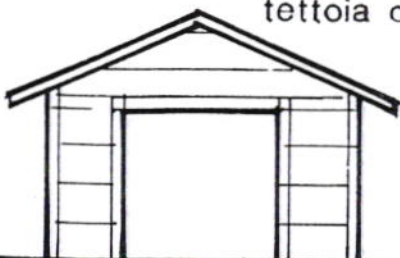
SPECIALMENTE INDICATI PER GLI AMBITI EXTRAURBANI



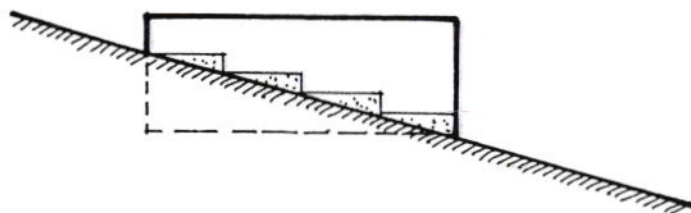
tettoia aperta



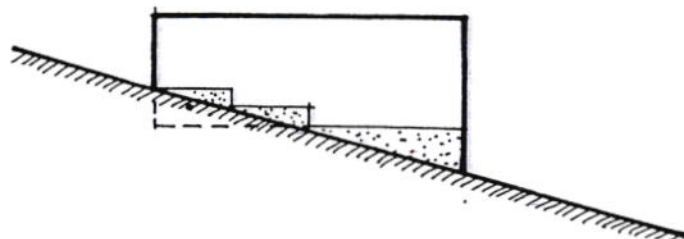
tettoia chiusa



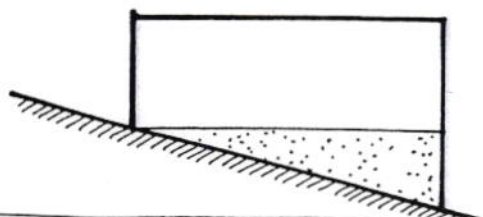
criteri insediativi su terreni acclivi



soluzione preferibile  
le parti entroterra saranno in  
calcestruzzo;  
tutte le parti esterne visibili  
in pietra



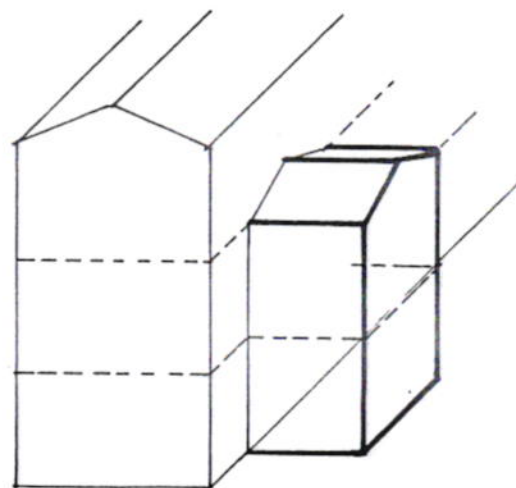
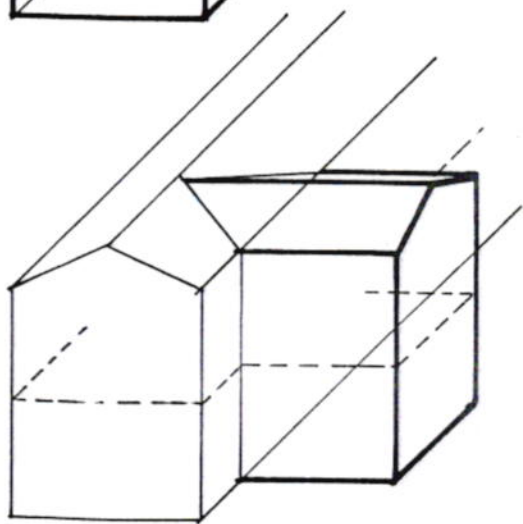
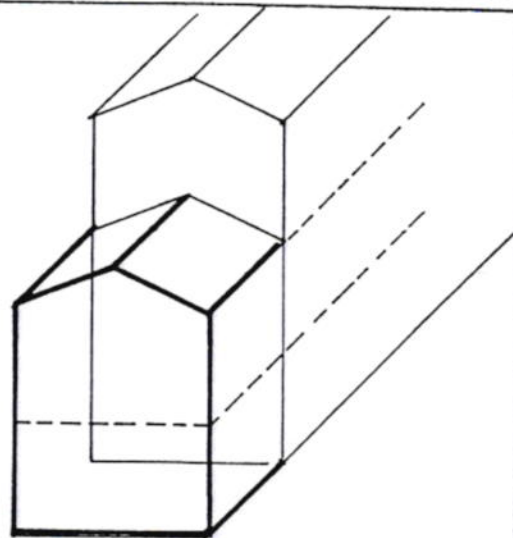
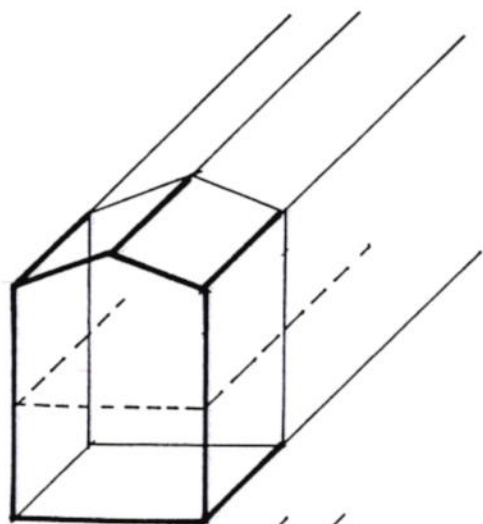
soluzione accettabile  
(idem come sopra)



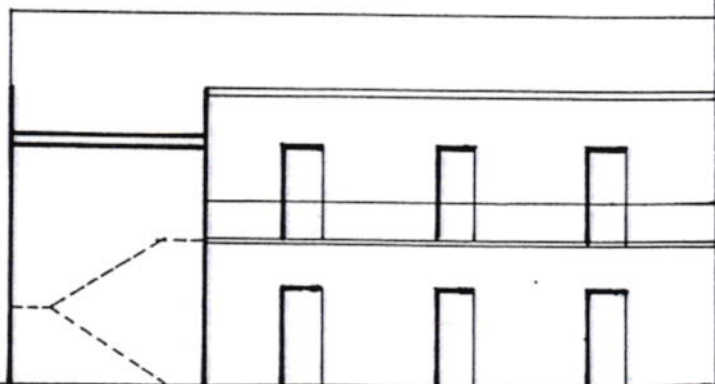
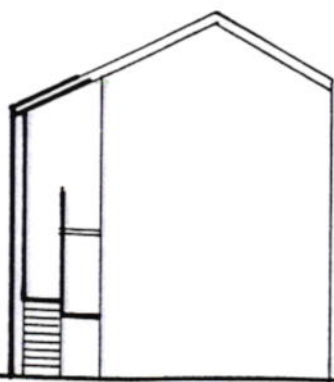
soluzione di norma  
non accettabile

## SCHEDA 7 AMPLIAMENTI

AMPLIAMENTI



SCALE ESTERNE

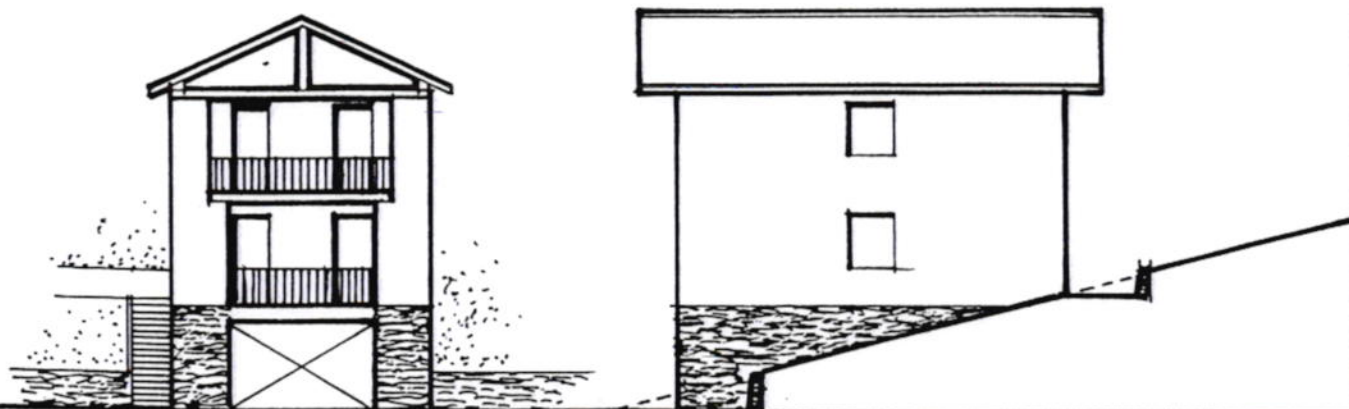




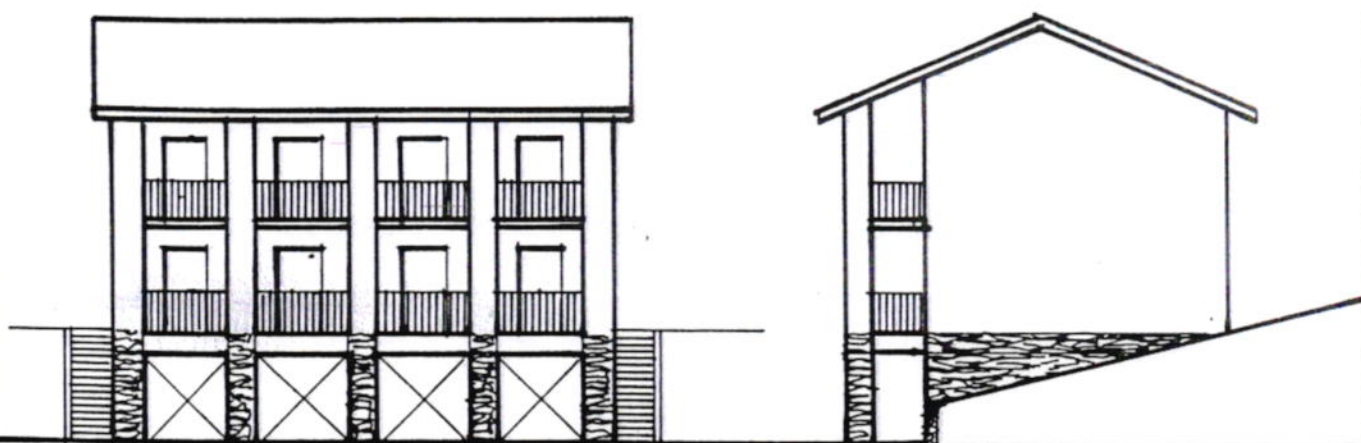
# SCHEDA 8 NUOVI FABBRICATI

ELEMENTI MORFOLOGICI DI RIFERIMENTO PER LE NUOVE COSTRUZIONI

fabbricato unifamiliare

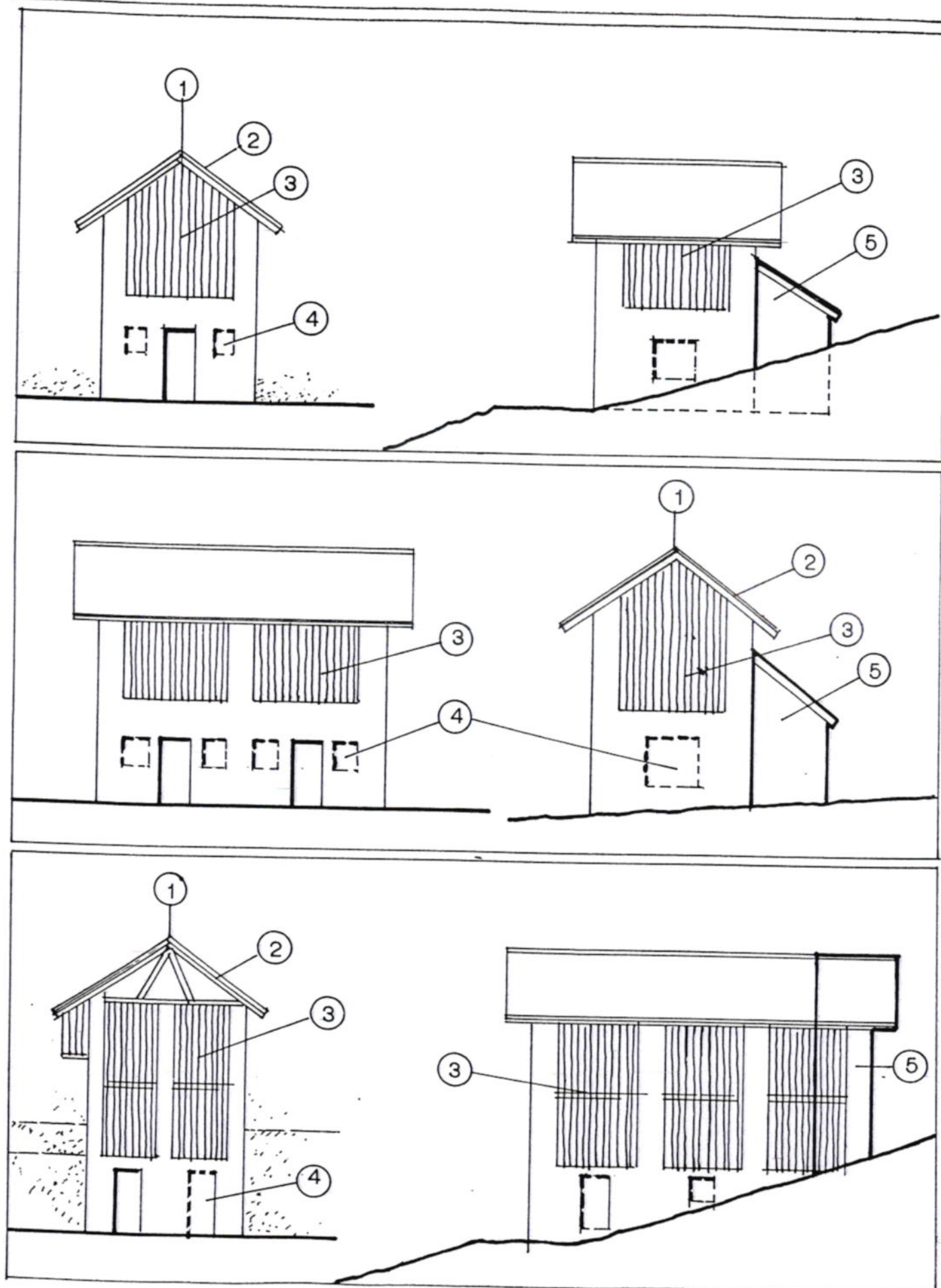


fabbricato bi ( o pluri ) familiare



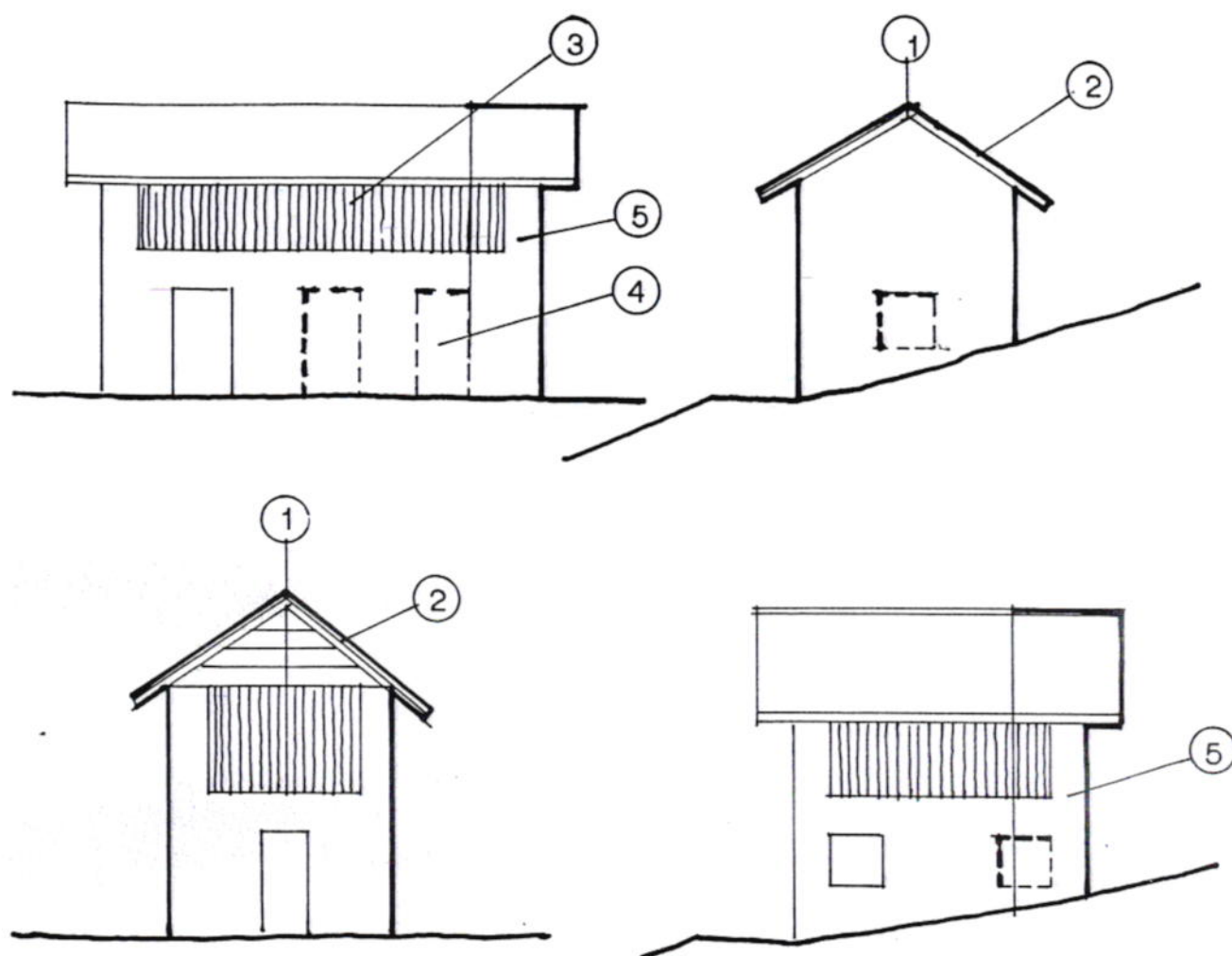
# SCHEDA 9 FABBRICATI RURALI

OBBIETTIVI MORFOLIGICI DA PERSEGUIRE



# SCHEDA 10 FABBRICATI RURALI

OBBIETTIVI MORFOLOGICI DA PERSEGUIRE



- 1     mantenimento delle esistenti simmetrie
- 2     mantenimento di pendenze e materiali  
(manto di copertura tegole marsigliesi salvo preesistenti)
- 3     mantenimento dei grigliati o degli assiti esistenti anteposti o nuove pareti od infissi
- 4     nuove aperture di piccola dimensione con antoni rustici, mordenzati scuro
- 5     ampliamenti: su lati a monte o proseguendo assialmente con gli stessi materiali, finiture, coloriture, del fabbricato preesistente, gli ampliamenti di diversa forma solo in pietra
- 6     mantenimento e restauro di ogni elemento architettonico tipico